

# Bluetooth Enabling T24 Modules

The following T24 modules can be Bluetooth enabled using the LM Technologies LM048 Bluetooth RS232 Serial Adapter (Available from Farnell 193-9402):

T24-BSi	Industrial base station
T24-GW1	Gateway
T24-SO	Serial Output

## Configuration

### T24 Modules

DIP Switch SW1 settings

1=off, 2=off, 3=off, 4=off, **5=on**, 6=off, **7=on**, 8=off

This sets the serial baudrate to 115200 baud.



### LM048 Adapter

Using the supplied configuration software (With the LM048 connected to a PC) set the following:

- Baudrate to 115200 baud.
- Echo Mode OFF
- Set the external slide switch to DTE



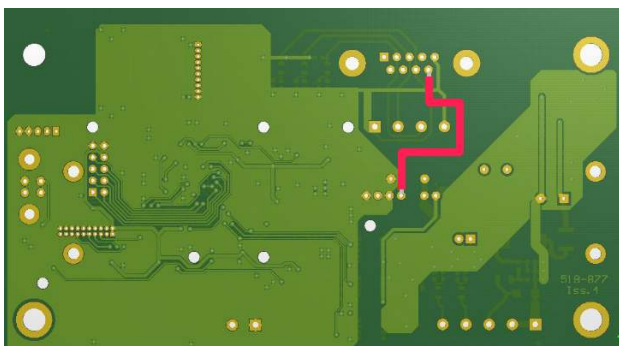
## Connection

### RS232

The LM048 adapter needs the supplied gender changer fitted to enable it to plug into the 9 way 'D' connector on the T24 modules. Due to the height of the Bluetooth module the T24 module lid cannot be fitted. There is the possibility of using a flexible connector or cable to allow the Bluetooth module to sit completely inside the T24 module enclosure but this would have to be sourced by the customer.

### Power

The LM048 adapter comes with a power supply and a USB cable which could be used to power the adapter. A neater solution is to modify the T24 module to allow it to power the Bluetooth adapter. The T24 module PCB will have to be removed from the enclosure and will involve soldering a wire to the rear of the PCB as follows:



### Software

When the adapter has been fitted to the T24 Module the rest of the configuration will be achieved on the PC, tablet or mobile phone that connects to the LM048 Bluetooth adapter.

## Distribuidor

**Brasil e América do Sul**

### CONTATO

#### Endereço

Rua Sete de Setembro, 2656 - Centro  
13560-181 - São Carlos - SP - Brasil

#### Telefone

+ 55 (16) 3371-0112  
+ 55 (16) 3372-7800

#### Internet

[www.metrolog.net](http://www.metrolog.net)  
[metrolog@metrolog.net](mailto:metrolog@metrolog.net)

