



GENERAL FEATURES

- 45°, 150° or 354° electrical angle
- 6 mm hollow shaft
- 31 mm body diameter
- Potentiometric output
- High linearity up to $\pm 0.2\%$
- Long life up to 5 million movements
- Resolution better than $0,1^\circ$
- Dust and moisture resistant, IP63 protection class
- No mechanical rotation limitation

APPLICATION FIELDS

- Textile machinery
- Automatic door control systems
- Automotive
- All kinds of control and measurement applications

TECHNICAL FEATURES

Electrical Data

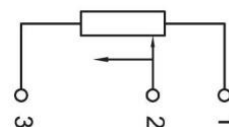
| | | | |
|---------------------------|---|-------------|-------------|
| Electrical Angle | 45° | 150° | 354° |
| Nominal Resistance | 5K, 10K | | |
| Resistance Tolerance | $\pm 20\%$ | | |
| Independent Linearity | $\pm 0.5\%$ | $\pm 0.2\%$ | $\pm 0.2\%$ |
| Repeatability | 0.1° max. | | |
| Supply Voltage | 42VDC max. | | |
| Recommended Wiper Current | 100 μ A max. | | |
| Power Rating | 0.5W / 40°C max. | | |
| Minimum Life (electrical) | 10 million movements | | |
| Electrical Connection | 3x0,102 mm ² soft PVC cable (standard 1m, optional others) | | |

Mechanical Data

| | |
|---------------------------|---------------------|
| Mechanical Angle | 360°, continuous |
| Torque | 0.5 Ncm max. |
| Minimum Life (mechanical) | 5 million movements |
| Operating Temperature | -25°C ... +85°C |
| Storage Temperature | -40°C ... +105°C |
| Housing Material | Aluminum |
| Protection Class | IP63 |
| Weight (with 1 m cable) | |

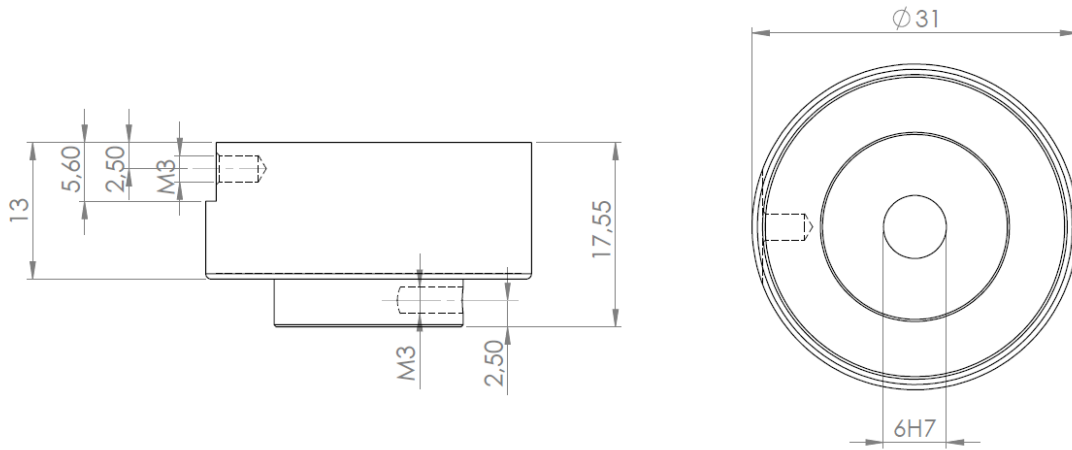
ELECTRICAL CONNECTIONS

| SIGNAL | CABLE COLOR |
|-----------------------|-------------|
| +V | Green (1) |
| Potentiometric output | Red (2) |
| -V | Yellow (3) |



Potentiometer connection (voltage divider)

MECHANICAL DIMENSIONS



ORDER CODE

| Model | | Angle | | Cable Length | | | | |
|---------------|---|-------|---|--------------------|---|----|---|-----|
| RHP | - | XXX | - | XXX | - | XX | - | XXX |
| Body Diameter | | | | Resistance Value | | | | |
| 030: 31 mm | | | | 5K: 5K 10K: 10K | | | | |

45: 45°
150: 150°
354: 354°

1M: 1 meter (standard)
 *Optional others

Atek Sensor Technology



Tuzla KOSB Organize Sanayi Bolgesi Melek Aras Bulvari, No:67 34956 Tuzla-Istanbul / TURKEY



Tel: +90 216 399 44 04



Fax: +90 216 399 44 02



www.ateksensor.com



info@ateksensor.com



Address / Endereço:

Rua Sete de Setembro, 2656
13560-181 - São Carlos - SP
Brazil / Brasil

Phone / Telefone:

+55 (16) 3371-0112
+55 (16) 3372-7800

Internet:

www.metrolog.net
metrolog@metrolog.net