

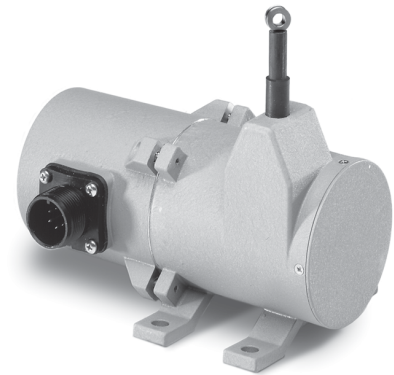
# PT8420 Installation Instructions

updated 3.19.07



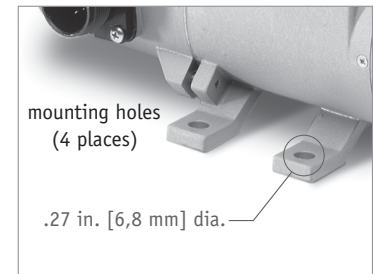
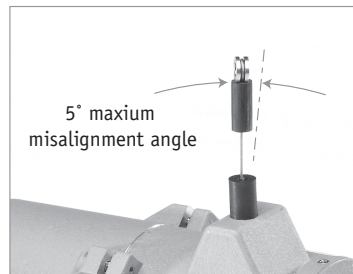
WARNING

- Do not free release measuring cable!
- Do not over extend measuring cable!
- Limit misalignment to 5° maximum!



## MECHANICAL

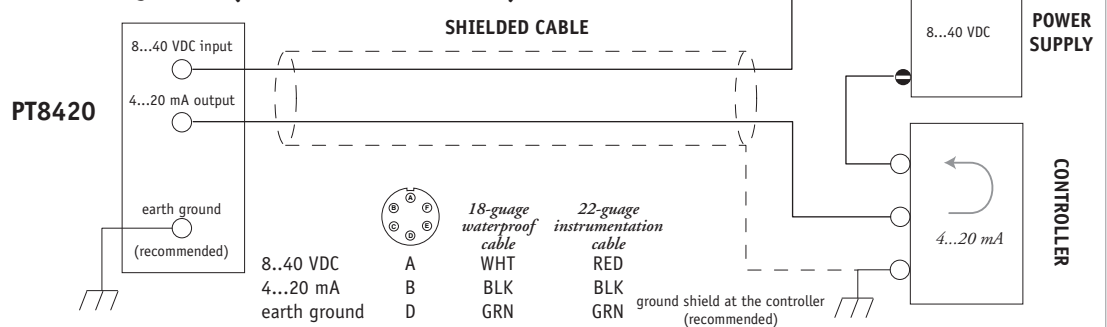
1. Mount transducer via the 4 feet to a flat solid surface.
2. Connect measuring cable to moving object.



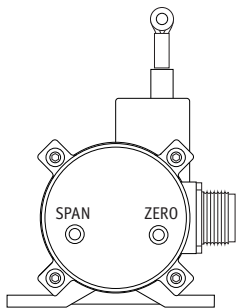
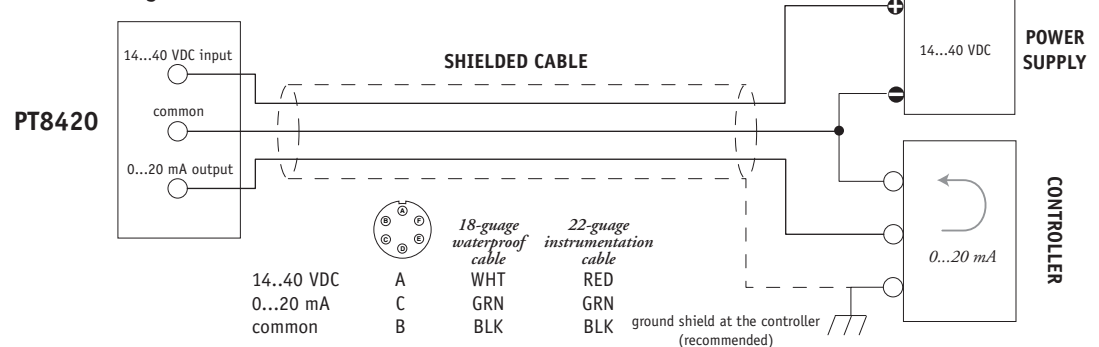
## ELECTRICAL

3. Connect system wiring.
4. If desired, use the zero and span controls to calibrate to exact measurement range (see below).

### 2-Wire System (non-hazardous area)



### 3-Wire System



### Changing Calibrated Range

- i. Remove Phillips-head cover screws to reveal zero and span trim pots
- ii. Extend measuring cable to 0/4 mA position and adjust zero pot.
- iii. Extend measuring cable to 20 mA position and adjust span pot
- iv. Repeat steps ii and iii.
- v. Replace plugs.