

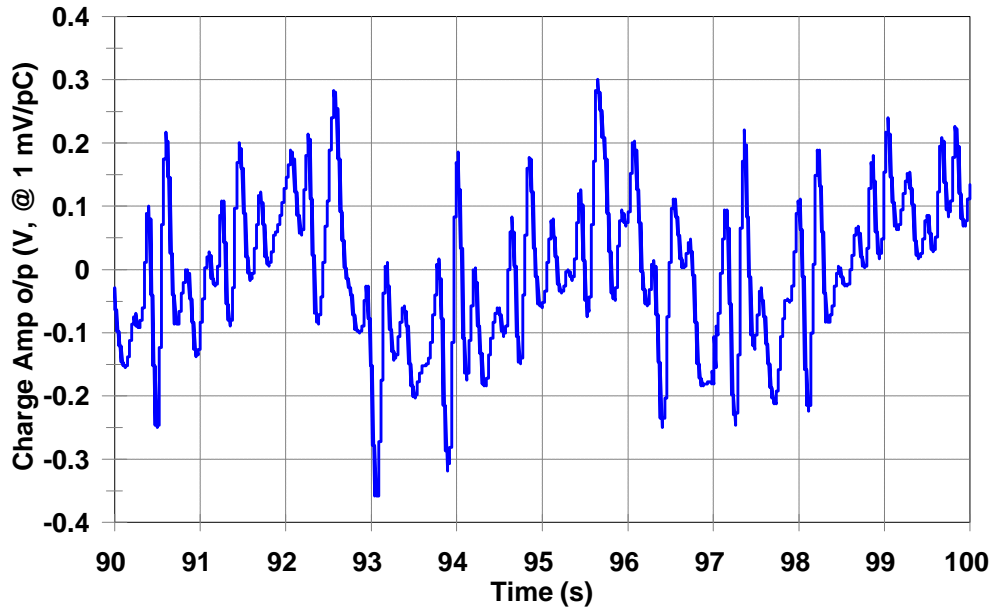
Inflatable Chair Gives Respiration & Pulse Signals

R H Brown, adapted from data collected on 7 September 1999

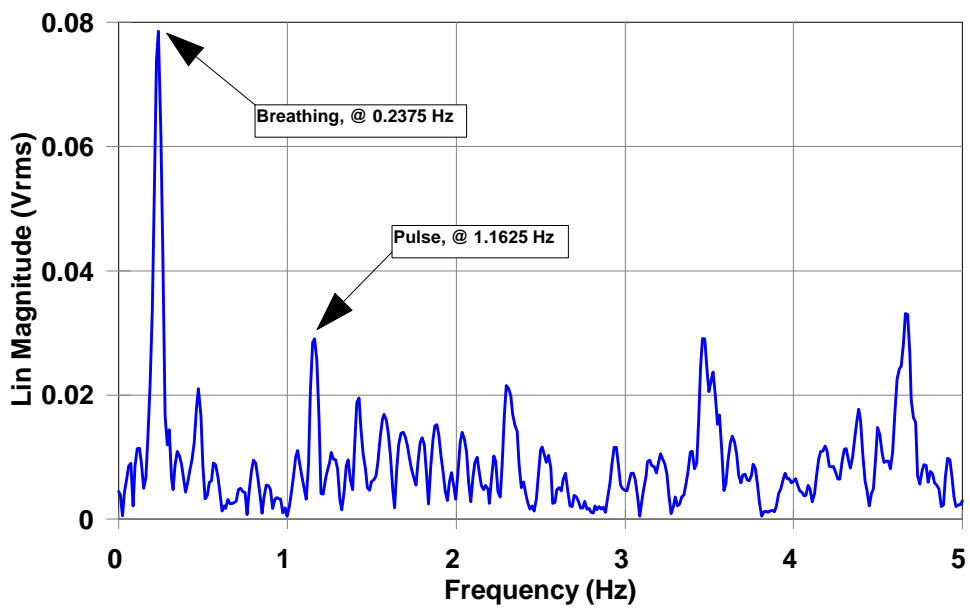
A custom shielded PVDF sensor with active dimensions 100 x 18 mm ("Voice" pick-up) was fixed using double-coated adhesive tape to an inflated vinyl chair. Signals were recorded using a charge amplifier with 0.2 Hz lower limiting frequency and 1 mV/pC sensitivity settings. A time buffer of 200 s total duration (40 records at 5 s per record) was collected for analysis.

The attached plots show components of breathing at 14.3 breaths per minute (0.2375 Hz) and pulse at 70 beats per minute (1.1625 Hz).

PVDF sensor on inflatable chair
(excerpt from 200 s time record)



PVDF sensor on inflatable chair
(zoom FFT of 80s [x8])



DEALER / REVENDEDOR

Brazil and South America / Brasil e América do Sul



Address / Endereço:

Rua Sete de Setembro, 2656
13560-181 - São Carlos - SP
Brazil / Brasil

Phone / Telefone:

+55 (16) 3371-0112
+55 (16) 3372-7800

Internet:

www.metrolog.net
metrolog@metrolog.net

www.metrolog.net