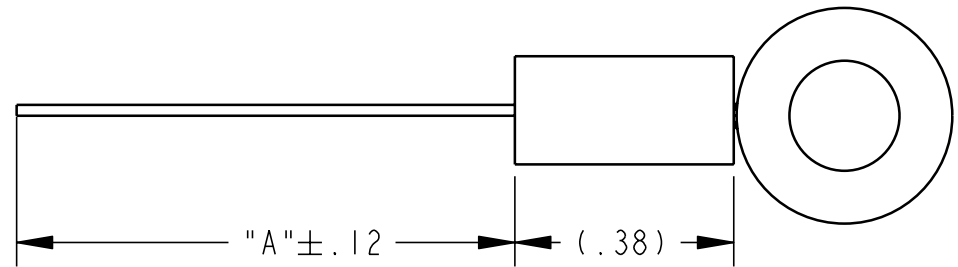
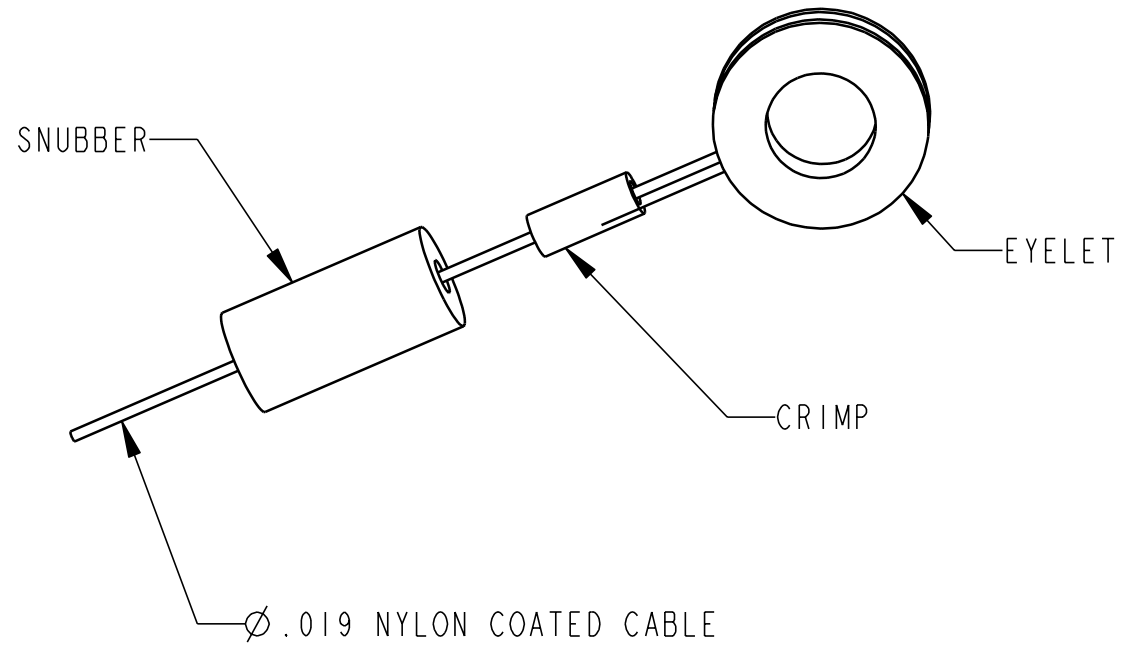


REVISIONS			
REV.	DESCRIPTION	DATE	APPROVED
B	SEE DCN # 3258		



RANGE	"A"
3	4.50
9	10.37
15	16.5
30	31.5

1) SEE PS-30 FOR PART NUMBERS.

NOTES: UNLESS OTHERWISE SPECIFIED

		UNLESS OTHERWISE SPECIFIED	DIMENSIONS AND TOLERANCES PER ANSI Y14.5	THIRD ANGLE PROJECTION	Celesco 20630 Plummer St. Chatsworth, CA. 91311 Tel (818) 701-2750 Fax (818) 701-2799 Transducer Products, Inc.
		REMOVE BURRS AND SHARP EDGES: .005- .015	UNLESS OTHERWISE SPECIFIED, DIMENSIONS ARE IN INCHES, TOLERANCES ARE:		
NEXT ASSEMBLY	USED ON	MACHINED FILLET RADIUS TO BE: .003- .010	DECIMALS: ANGLES:	APPROVALS	TITLE
APPLICATION		ALL Ø ON COMMON C. TO BE WITHIN: .005 T.I.R.	.XX ± .01 X.X° ± 5.0°	DATE	CABLE ASSEMBLY MODEL MT2A
MATERIAL		PERPENDICULAR SURFACES TO BE WITHIN: .002	.XXX ± .005 X.XX° ± 0.5°	DRAWN <i>G. ENNIS</i> 02/13/02	
FINISH			MACHINED SURFACE FINISH: 125/√	CHKD	CODE IDENT. NO.
			DO NOT SCALE DRAWING		DWG. NO.
					REV.
					B 52158
					603933
					B
					SCALE: NONE
					SHEET 1 OF 1

celesco Transducer Products			DRAWING CHANGE NOTICE			DRAWING NO. 603933	REV. B
			SHEET 1 OF 1				
DISPOSITION OF PARTS	USE AS IS	MUST CONFORM	PART NAME CABLE ASSEMBLY MODEL MT2A			DCN NO. 3258	
IN FABRICATION	X		ENGINEERING APPROVAL			SIGN-OFFS	SIGNATURE
IN STOCK	X			SIGNATURE	DATE	PROCESS ENGINEER	
BOXED PARTS	X		PREPARED BY	G.Ennis		INSPECTION	
IN ASSEMBLIES	X		CHECKED BY			PLANNING	
IN BOND	X		APPROVED			PURCHASING	
CUSTOMER REWORK	X		GEN MGR			PRODUCTION	
			DCR NO. (IF APPLICABLE)	XXXX		SALES	
CHANGE NO.	REVISED OR CHANGED FROM			ZONE	ADDED OR CHANGED TO		
1	5				4.5		
2	11				10.37		
3	17				16.50		
4	32				31.50		
5							
6							
7							
8							
9							
REASON							
THE LENGTH OF THE CABLE WAS INCORRECT.							
REMARKS							
							603933
							DRAWING NO.

DEALER / REVENDEDOR

Brazil and South America / Brasil e América do Sul



Address / Endereço:

Rua Sete de Setembro, 2656
13560-181 - São Carlos - SP
Brazil / Brasil

Phone / Telefone:

+55 (16) 3371-0112
+55 (16) 3372-7800

Internet:

www.metrolog.net
metrolog@metrolog.net

www.metrolog.net