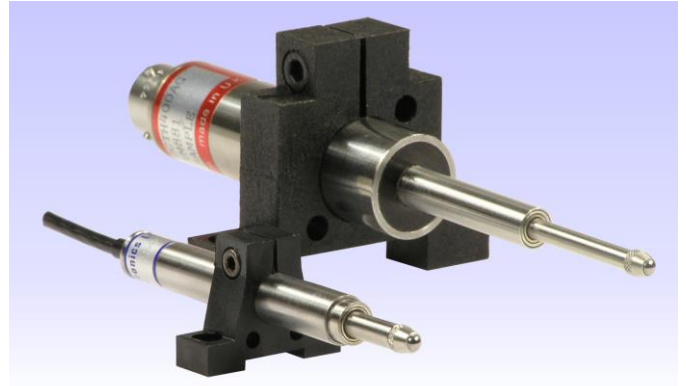


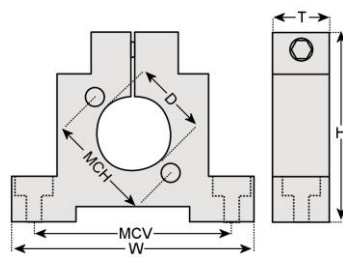
Mounting Block

Our mounting block offers a means of supporting our transducers. We suggest that at least 2 are used per transducer and for longer stroke units 3 or 4.

For very high accuracy or physically demanding applications, you may wish to use metal mounting blocks.

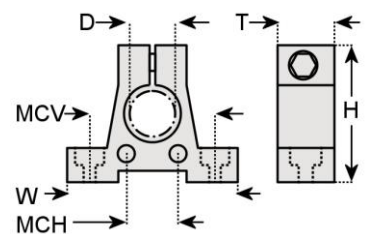


MB01



D	20.6mm
W	64mm
H	50mm
T	13mm
MCV	52mm
MCH	30mm
Major construction material	Glass filled nylon
Operating temperature range	-20°C to 110°C (200°C For short periods)

MB02



D	9.5mm or 8mm
W	30mm
H	24mm
T	10mm
MCV	23mm
MCH	10mm
Major construction material	Glass filled nylon
Operating temperature range	-20°C to 110°C (200°C For short periods)

All dimensions and specifications are nominal.

Due to our policy of on-going development, specifications may change without notice. Any modification may affect some or all of the specifications for our equipment.

UK Head Office
 RDP Electronics Ltd
 Grove Street, Heath Town
 Wolverhampton, West Midlands, WV10 0PY
 United Kingdom
 Tel: +44 1902 457512
 Fax: +44 1902 452000
 Email: sales@rdpe.com
 URL: www.rdpe.com
 Registered in England No. 1688591

Distribuidor

Brasil e América do Sul

CONTATO

Endereço

Rua Sete de Setembro, 2656 - Centro
13560-181 - São Carlos - SP - Brasil

Telefone

+ 55 (16) 3371-0112
+ 55 (16) 3372-7800

Internet

www.metrolog.net
metrolog@metrolog.net

