

SPECIFICATIONS:

Analog I/Os: (See Note 1)

- 0 - 5 V DC output, 8 - 30 V DC input, 35 mA max.
- 0.5 - 4.5 V DC output, 8 - 30 V DC input, 35 mA max.
- 0 - 10 V DC output, 12 - 30 V DC input, 35 mA max.
- 4 - 20 mA DC output, 18 - 30 V DC input, 60 mA max. (75 C max.)

Measuring Ranges: See range table

Zero and Full Scale: SenSet Adjustable

Linearity Error: ±0.15% of FSO (Full Span Output) typical, ±0.25% max.

Resolution: 0.025% of FSO

Update Rate: 300 Hz nominal

Operating Temperature Range: -20 to 85 C (-40 to 105 C extended temp.)

Temperature coefficient: ±0.015% of FSO/K

Humidity: 95% RH non-condensing

Vibration: 5 - 20 Hz, 0.5 inch p-p; 20 - 2000 Hz, 4.2 g p-p

Shock: 1000 g, 11 msec.

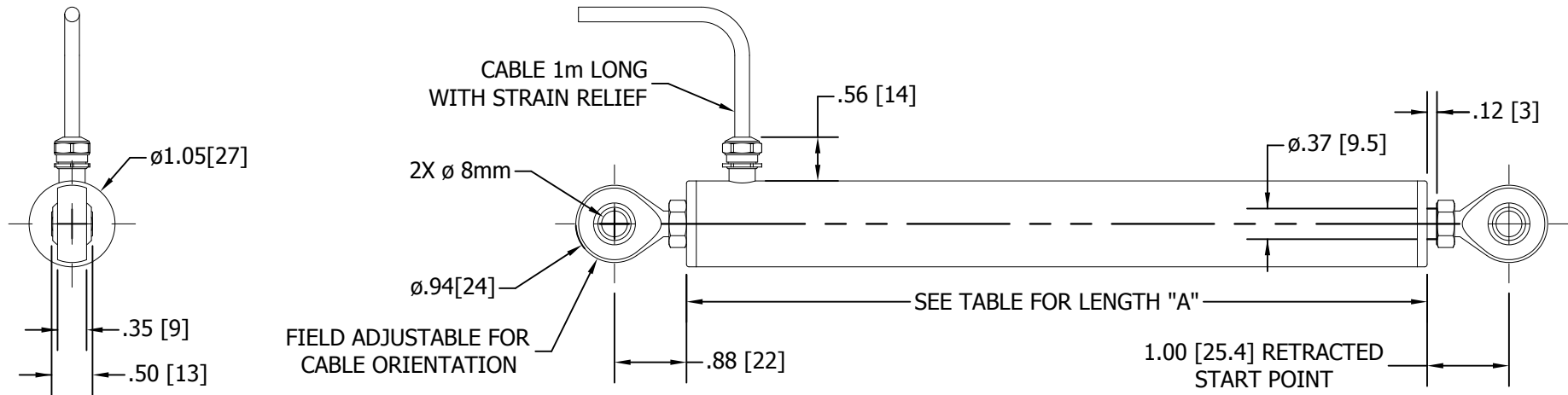
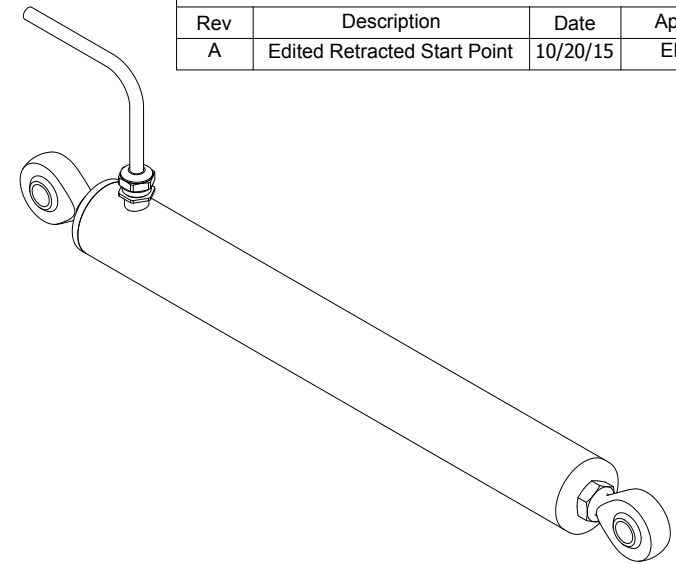
Sealing: IEC IP-67

Note 1: Analog output is maximum with rod extended;
see technical data sheet to specify reversed output.

Specifications are subject to change without notice.

| I/O Function | Cable Color |
|---------------|-------------|
| + Power Input | Red |
| Ground | Black |
| Analog output | Green |
| SenSet™ | White |

| Rev | Description | Date | App. |
|-----|------------------------------|----------|------|
| A | Edited Retracted Start Point | 10/20/15 | EH |

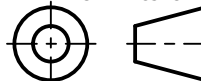


UNLESS OTHERWISE SPECIFIED:

1. DO NOT SCALE DRAWING
2. DIMENSIONS ARE IN INCHES
3. INTERPRET PER ANSI Y14.5M-1994
4. DEBURR/BREAK SHARP EDGES
5. DIMS ARE BEFORE FINISH
6. (DATA) FOR REFERENCE ONLY

| TOLERANCES | |
|-------------|---------|
| DECIMAL | ANGULAR |
| .XX .010 | ∠ .5° |
| .XXX .005 | |

THIRD ANGLE PROJECTION



DRAWN
G Miller 10/14/15

ENGINEER

CHECKED

QA

MFG

APPROVED:
XX XXXXXX 10/14/15

ALLIANCE SENSORS GROUP

A DIVISION OF H. G. SCHAEVITZ LLC

MOORESTOWN, NEW JERSEY USA alliancesensors.com

TITLE

LRLx-27-XXX-R SERIES LVIT OUTLINE

| | | |
|-----------|------------------------|----------|
| SIZE A | DWG NO 3000-0016-XX | REV A |
|-----------|------------------------|----------|

| | |
|---------------|--------------|
| SCALE NONE | SHEET 1 OF 1 |
|---------------|--------------|

UNIT LENGTH TABLE

| NOMINAL RANGE | "A" BODY LENGTH |
|----------------------|-------------------------|
| 10.0 INCHES [250 mm] | 13.50 INCHES [342.9 mm] |
| 12.0 INCHES [300 mm] | 15.50 INCHES [393.7 mm] |
| 14.0 INCHES [350 mm] | 17.50 INCHES [444.5 mm] |
| 16.0 INCHES [400 mm] | 19.50 INCHES [495.3 mm] |
| 18.0 INCHES [450 mm] | 21.50 INCHES [546.1 mm] |

DISTRIBUTOR / DISTRIBUIDOR

Brazil and South America / Brasil e América do Sul



Address / Endereço:

Rua Sete de Setembro, 2656
13560-181 - São Carlos - SP
Brazil / Brasil

Phone / Telefone:

+55 (16) 3371-0112
+55 (16) 3372-7800

Internet:

www.metrolog.net
metrolog@metrolog.net

ALLIANCE SENSORS GROUP
A DIVISION OF H.G. SCHAEVITZ LLC

Alliance Sensors Group
102 Commerce Drive, Unit 8
Moorestown, New Jersey 08057 USA
Ph: 856-727-0250
www.alliancesensors.com
info@alliancesensors.com