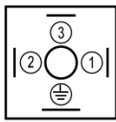
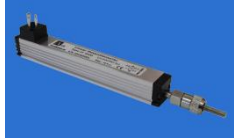


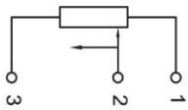
**LF SERIES LINEAR POTENTIOMETER**  
"Quick Connection Guide"

**WARNING !**

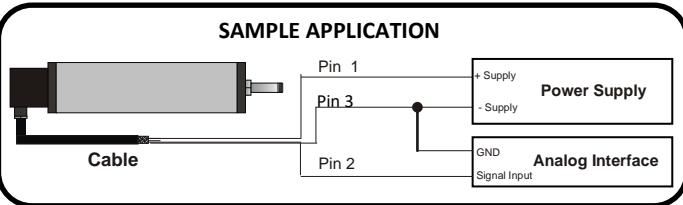
Never connect the power supply cable to pin 2 while socket connection. Otherwise the scale card circuit and contacts may be damaged. In this case, the device will be **out of warranty**.



Connections	
<b>Pin 1</b>	Resistance / Supply
<b>Pin 2</b>	Signal Output
<b>Pin 3</b>	Resistance / Supply



Potentiometric Connection  
(Voltage Divider)

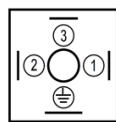
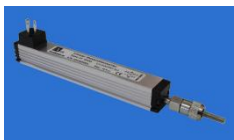


[www.ateksensor.com](http://www.ateksensor.com)

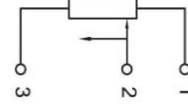
**LF SERIES LINEAR POTENTIOMETER**  
"Quick Connection Guide"

**WARNING !**

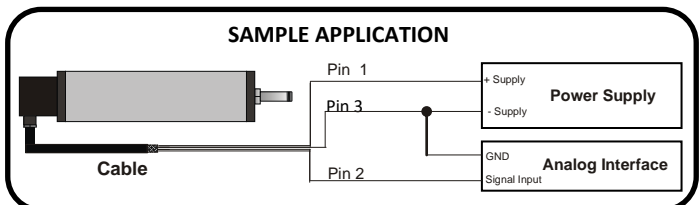
Never connect the power supply cable to pin 2 while socket connection. Otherwise the scale card circuit and contacts may be damaged. In this case, the device will be **out of warranty**.



Connections	
<b>Pin 1</b>	Resistance / Supply
<b>Pin 2</b>	Signal Output
<b>Pin 3</b>	Resistance / Supply



Potentiometric Connection  
(Voltage Divider)

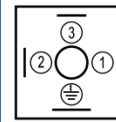
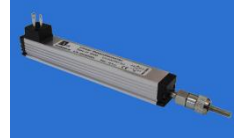


[www.ateksensor.com](http://www.ateksensor.com)

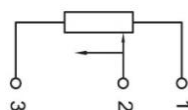
**LF SERIES LINEAR POTENTIOMETER**  
"Quick Connection Guide"

**WARNING !**

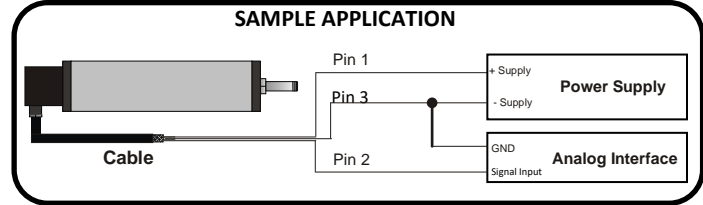
Never connect the power supply cable to pin 2 while socket connection. Otherwise the scale card circuit and contacts may be damaged. In this case, the device will be **out of warranty**.



Connections	
<b>Pin 1</b>	Resistance / Supply
<b>Pin 2</b>	Signal Output
<b>Pin 3</b>	Resistance / Supply



Potentiometric Connection  
(Voltage Divider)

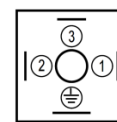
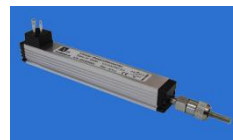


[www.ateksensor.com](http://www.ateksensor.com)

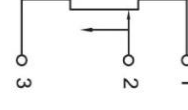
**LF SERIES LINEAR POTENTIOMETER**  
"Quick Connection Guide"

**WARNING !**

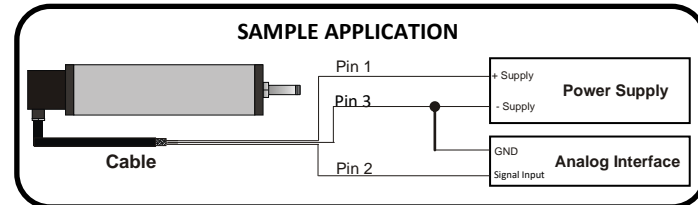
Never connect the power supply cable to pin 2 while socket connection. Otherwise the scale card circuit and contacts may be damaged. In this case, the device will be **out of warranty**.



Connections	
<b>Pin 1</b>	Resistance / Supply
<b>Pin 2</b>	Signal Output
<b>Pin 3</b>	Resistance / Supply



Potentiometric Connection  
(Voltage Divider)



[www.ateksensor.com](http://www.ateksensor.com)



**Address / Endereço:**

Rua Sete de Setembro, 2656  
13560-181 - São Carlos - SP  
Brazil / Brasil

**Phone / Telefone:**

+55 (16) 3371-0112  
+55 (16) 3372-7800

**Internet:**

www.metrolog.net  
metrolog@metrolog.net