



ED-17

Serial Output Magnetic Encoder

SPECIFICATIONS

- **9-bit absolute encoder**
- **Serial SSI interface**
- **IP52 sealing**
- **Ball bearing**
- **Excellent stability – no optic degradation**

The ED-17 magnetic encoder is an absolute encoder with 9-bit resolution.

The device can be easily mounted onto an existing shaft.

The serial output provides absolute angular position information even when power is cycled.

The encoder is designed with modular and flexible construction methods.

FEATURES

- Magnetic sensing technology
- Encapsulated electronics/sealed unit
- Digital SSI interface
- Low profile
- Consistent rotational torque
- IP52 sealing
- Metallic threaded bushing mounting
- Industrial temperature range (-40°C to 85°C)
- Excellent stability – no optic degradation

APPLICATIONS

- Marine, avionics position control
- Marine steering
- Pump monitoring and control
- Camera position and control
- XY stage positioning
- Radio controls
- Medical diagnostic equipment
- Valve position
- Throttle position control/feedback

PERFORMANCE SPECS (Note1)

Parameters	ED-17-BB-512-S-P
Supply current	30 mA
Operating voltage (Vcc)	5 VDC \pm 5%
Resolution	0.7°
Accuracy	1.4°
Operating temperature range	-40 °C to 85 °C
Power-up time	20 ms

Bearing:

Parameters	ED-17-BB-512-S-P
Bearings	Ball
Maximum speed	3000 RPM
Bearing life	30,000,000 cycles

(NOTE1): Vcc = 5 V, Ambient Temperature 25 °C

MECHANICAL

Parameters	ED-17-BB-512-S-P
Axial load (max.)	20 N
Radial load (max.)	10 N
Shaft end play axial (max.)	0.13 mm
Shaft radial play (max.)	0.25 mm (15.3 mm from thread)
Shaft push-in force	9 N
Shaft pull-out force	1.3 N
Run out (max.)	0.25 mm (19 mm from thread)
Bushing mounting torque	1.1 Nm

DIMENSIONS

all dimensions mm [inch]

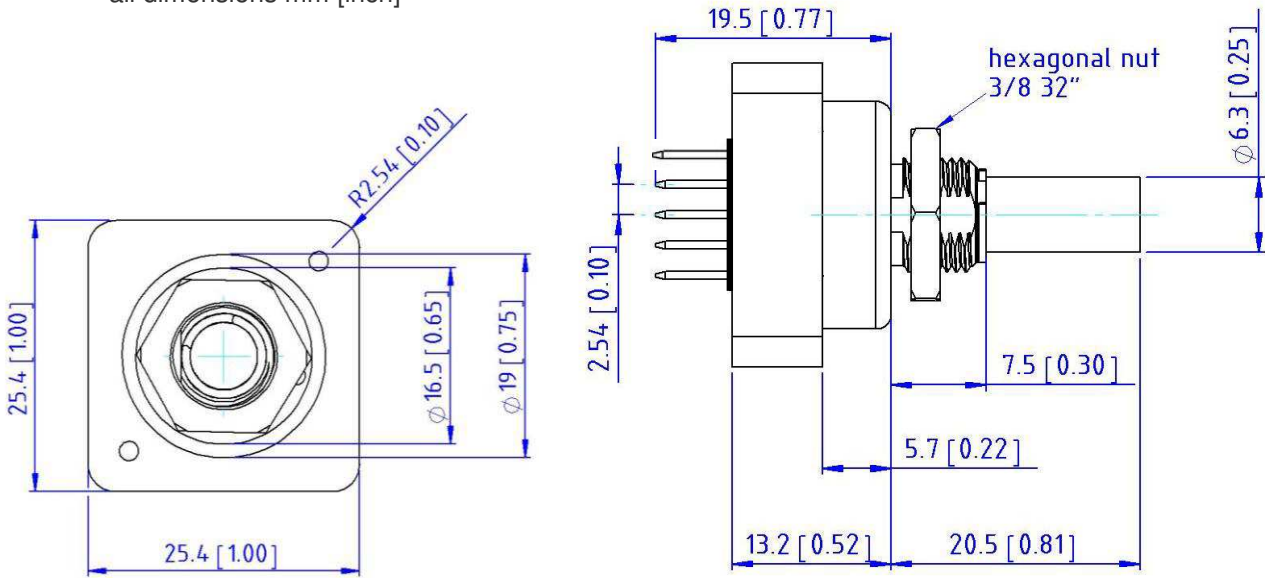


Figure 1: Dimensions of the ED-17-BB-512-S-P (top and side view)

PINNING

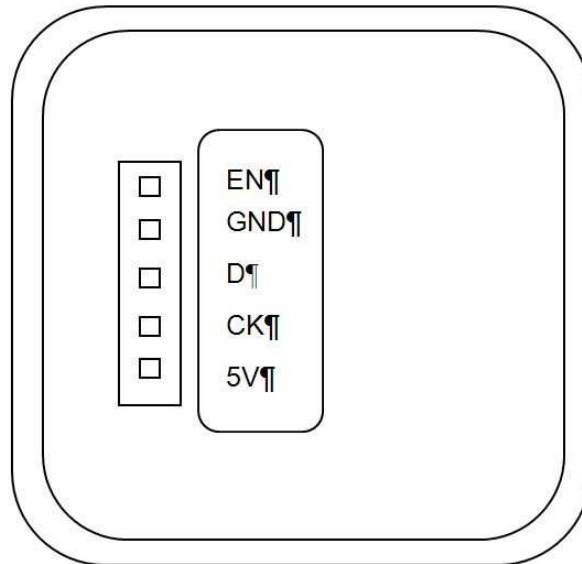


Figure 2: Pinning of the ED-17-BB-512-S-P (bottom view)

BINARY SYNCHRONOUS SERIAL INTERFACE (SSI)

Parameter	Symbol	Min.	Max.	Unit
Clock period	t _{CL}	1.2	16	μs
Clock high	t _{High}	0.6	15.4	μs
Clock low	t _{Low}	0.6	15.4	μs
Delay time	t _D	16	22	μs

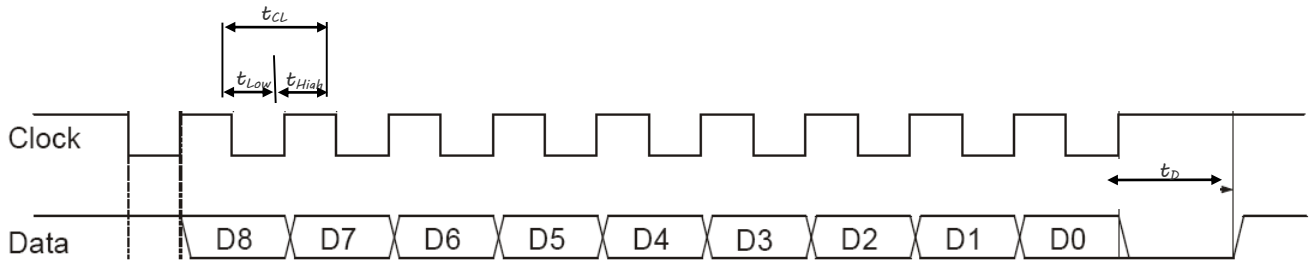


Figure 3: SSI timing diagram

The clock signal must always start from high. At the first low/high transition the encoder transmits the most significant bit (MSB) and at each low/high transition of the clock signal the next data bit is transferred. After sending the least significant bit (LSB) the data line is forced low and before a new position can be read a waiting time of t_D max. is required.

The absolute position can be calculated using (1).

$$rotation\ angle = SSIvalue_{decimal} \cdot \left(\frac{360^\circ}{512} \right) \tag{1}$$

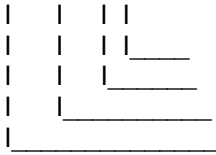
ENVIRONMENTAL

Vibration	MIL-STD-202F Method 204D Test Condition B
Shock	MIL-STD-202F Method 213B Test Condition C
Humidity	MIL-STD-202F Method 103B Test Condition A
Thermal Shock	MIL-STD-202F Method 107G Test Condition A
Operating Temperature	-40 °C to 85 °C
Storage Temperature	-55 °C to 125 °C

ORDERING INFORMATION

PART NUMBERING Model Number+ Bearing+ Output resolution+ Serial output + Connection

ED-17-BB-512-S-P



Connection
 Output
 Output Range
 Bearing

Options:

P = Pin header
 S = Serial output
 512 = 9-bit resolution
 BB = Ball Bearing

NORTH AMERICA

Measurement Specialties, Inc.,
 a TE Connectivity Company
 1000 Lucas Way
 Hampton, VA 23666
 United States
 Phone: +1-800-745-8008
 Fax: +1-757-766-4297
 Email: sales@meas-spec.com

EUROPE

MEAS Deutschland GmbH (Europe)
 a TE Connectivity Company
 Hauert 13
 D-44227 Dortmund
 Germany
 Phone: +49-(0)231-9740-0
 Fax: +49-(0)231-9740-20
 Email: info.de@meas-spec.com

ASIA

Measurement Specialties (China), Ltd.,
 a TE Connectivity Company
 No. 26 Langshan Road
 Shenzhen High-Tech Park (North)
 Nanshan District, Shenzhen 518057
 China
 Phone: +86-755-33305088
 Fax: +86-755-33305099
 Email: info.cn@meas-spec.com

TE.com/sensorsolutions

Measurement Specialties, Inc., a TE Connectivity company.

Measurement Specialties, TE Connectivity, TE Connectivity (logo) and EVERY CONNECTION COUNTS are trademarks. All other logos, products and/or company names referred to herein might be trademarks of their respective owners.

The information given herein, including drawings, illustrations and schematics which are intended for illustration purposes only, is believed to be reliable. However, TE Connectivity makes no warranties as to its accuracy or completeness and disclaims any liability in connection with its use. TE Connectivity's obligations shall only be as set forth in TE Connectivity's Standard Terms and Conditions of Sale for this product and in no case will TE Connectivity be liable for any incidental, indirect or consequential damages arising out of the sale, resale, use or misuse of the product. Users of TE Connectivity products should make their own evaluation to determine the suitability of each such product for the specific application.

© 2015 TE Connectivity Ltd. family of companies All Rights Reserved.