

Instruction Manual
Monitor Software for Inclinometer
DOG2 MEMS-Series USB
DOG1 MEMS-Series USB

Version 1.0



DOG2 MEMS-Series USB / DOG1 MEMS-Series USB

Table of contents

1	General Information	3
2	General Software Installation	3
3	Parameter Settings.....	5
3.1	Internal Filter.....	6
3.2	Display Resolution	6
3.3	Post Filter.....	7
4	Start Program.....	8
5	Inclination Sensor Monitor Program	9
6	Additional Information	11

DOG2 MEMS-Series USB / DOG1 MEMS-Series USB

History

Version	Date	Purpose	Author
1.0	2013-06-05	Draft DOG1/2 MEMS Series USB	M.Zürn

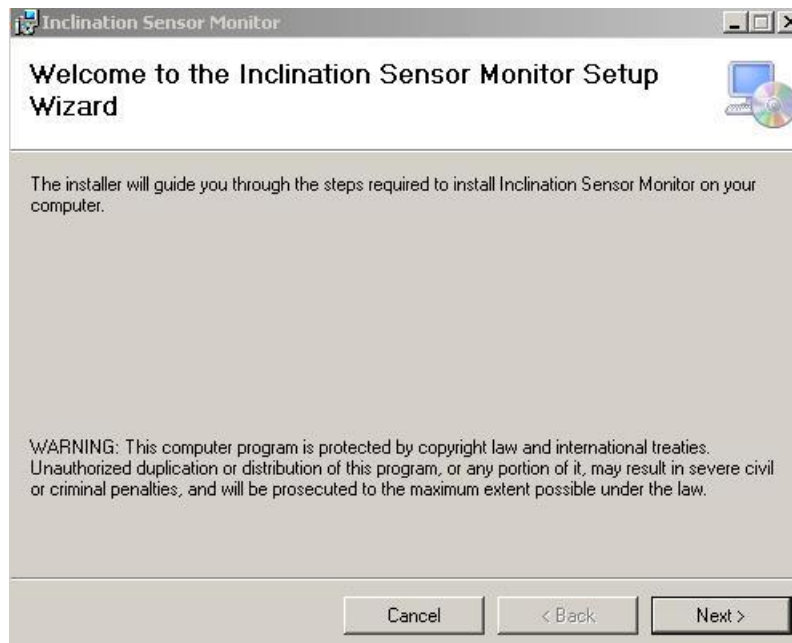
1 General Information

The monitor software offers the customer a very quick and easy way to communicate with the DOG2 MEMS Series USB (dual axis version) and DOG1 MEMS Series USB (single axis version) inclinometers produced by MEAS Deutschland GmbH.

2 General Software Installation

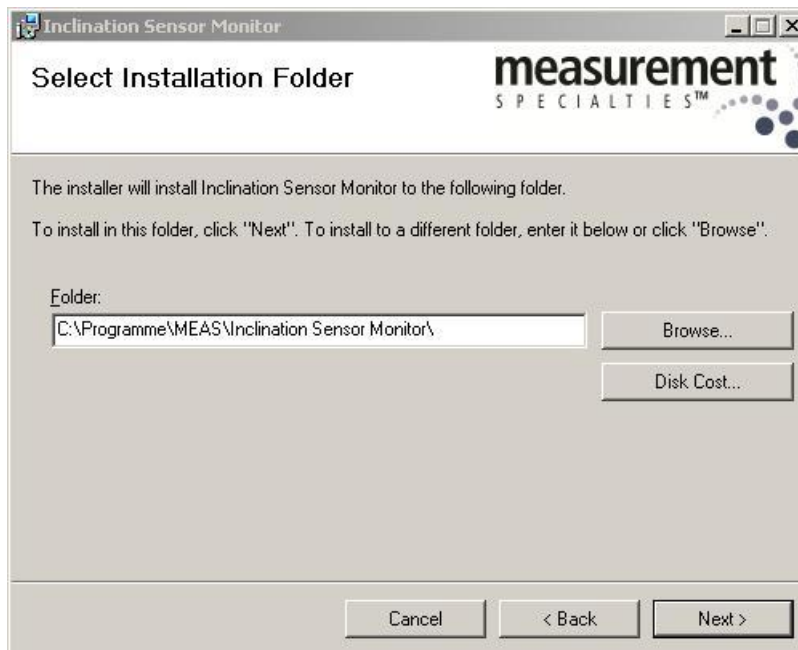
Please follow the instructions below to install the software on Windows 7 or XP:

- Start the setup.exe or setup-x.xx.msi and click on "Next".
The installation process `Inclination Sensor Monitor` will start.

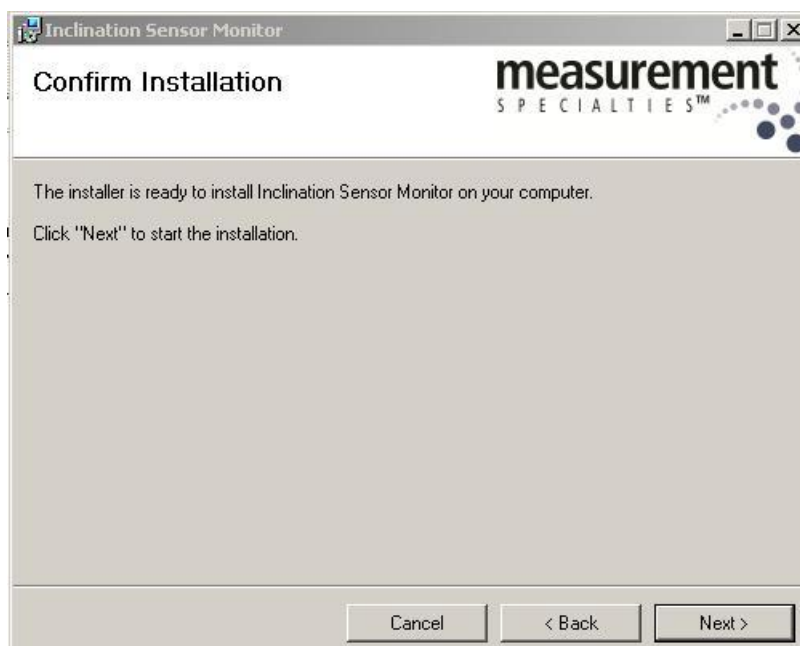


DOG2 MEMS-Series USB / DOG1 MEMS-Series USB

- Select the directory where you want the `Installation Sensor Monitor` to be installed, and click `Next`.

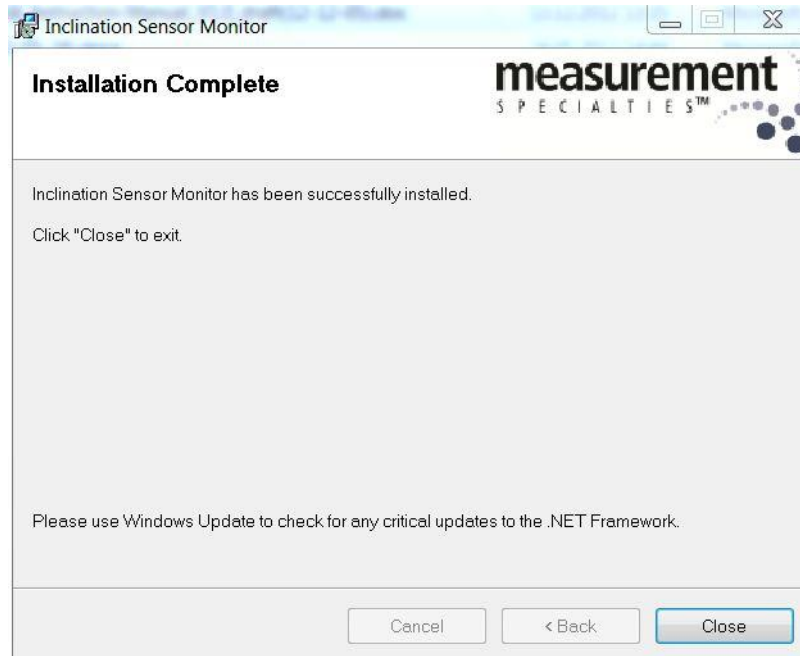


- Click `Next` on the confirmation screen.



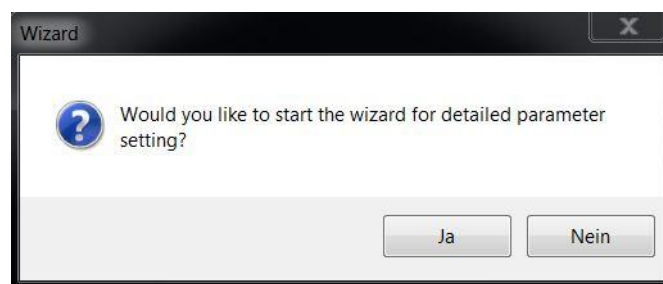
DOG2 MEMS-Series USB / DOG1 MEMS-Series USB

- When the installation process completes, click 'Close'. The program will then automatically start.



3 Parameter Settings

The `Wizard` enables you to set some initial operating parameters for the inclinometer. Select `yes` or `no`.



If you select `no`, the monitor program starts with the default settings. You have the ability to change the settings later.

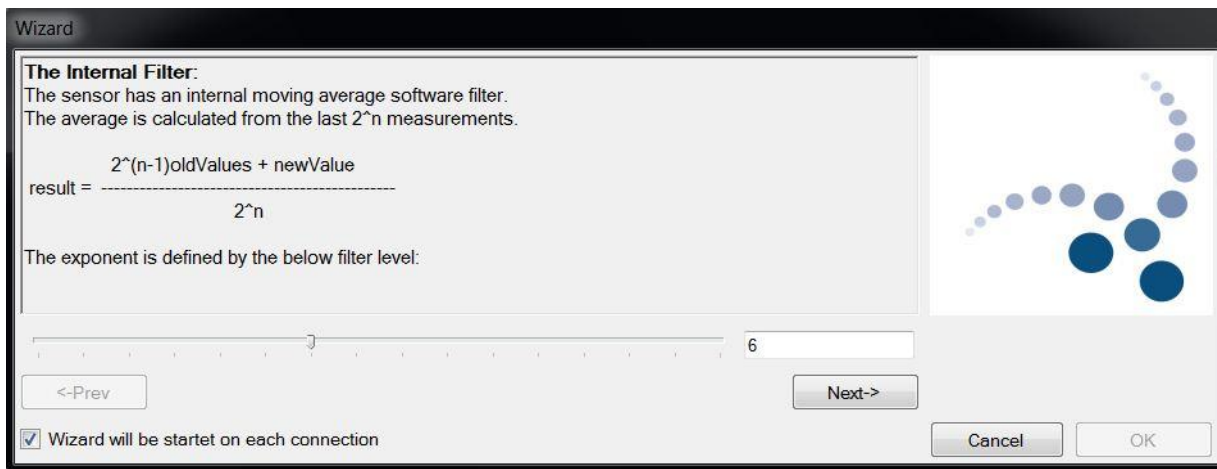
Instruction Manual

DOG2 MEMS-Series USB / DOG1 MEMS-Series USB

3.1 Internal Filter

If you selected `yes` above;

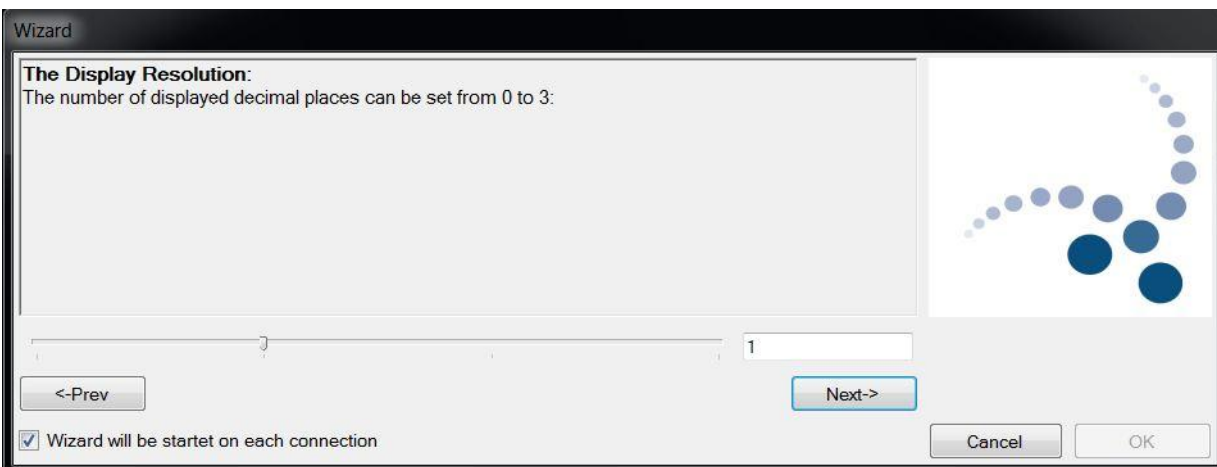
- The software features a moving average filter, which can help to reduce the influences of shock and vibration during the measurement. The filter offers parameter settings between `0` up to `10`.
`0` = no filter active, `10` = maximal filtering, default is `5`.



3.2 Display Resolution

The display resolution offers four options:

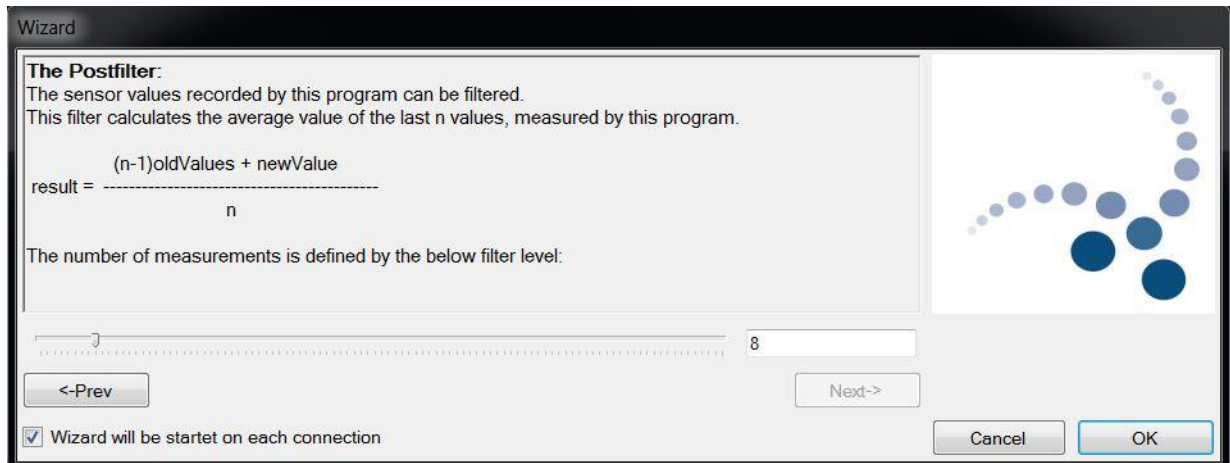
1 deg, 0.1 deg, 0.01 deg and 0.001 deg



DOG2 MEMS-Series USB / DOG1 MEMS-Series USB

3.3 Post Filter

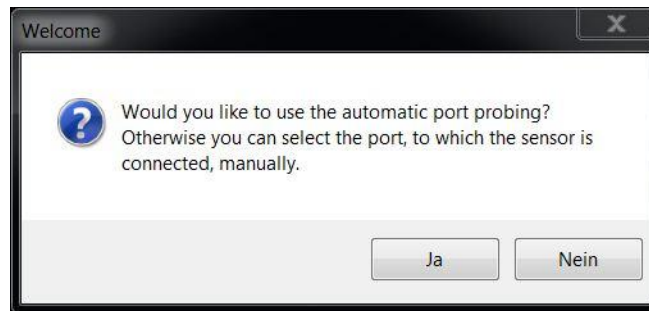
The post filter can be set between '1' up to '10', default value is '8'.



DOG2 MEMS-Series USB / DOG1 MEMS-Series USB

4 Start Program

After the program starts you get a `welcome` window, which offers you the possibility to perform an automatic scan for a connected inclinometer.

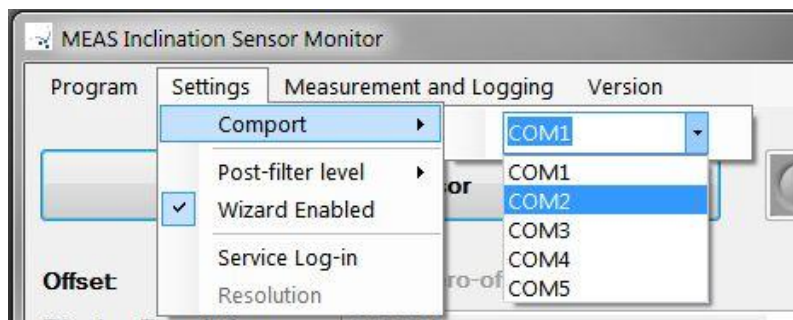


Select `yes`, and the com port scanning will start.



Select `no`, and the monitor program will start without com port scanning.

You also have the ability to select the com port manually. To do so select `settings`->, `Comport` at the menu bar and choose the com port, the sensor is connected.



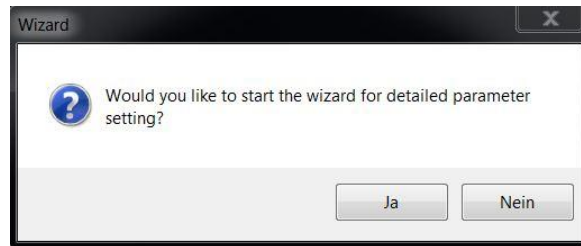
Instruction Manual

DOG2 MEMS-Series USB / DOG1 MEMS-Series USB

Click on the button 'Connect sensor', and a connection via the selected com port will be established.

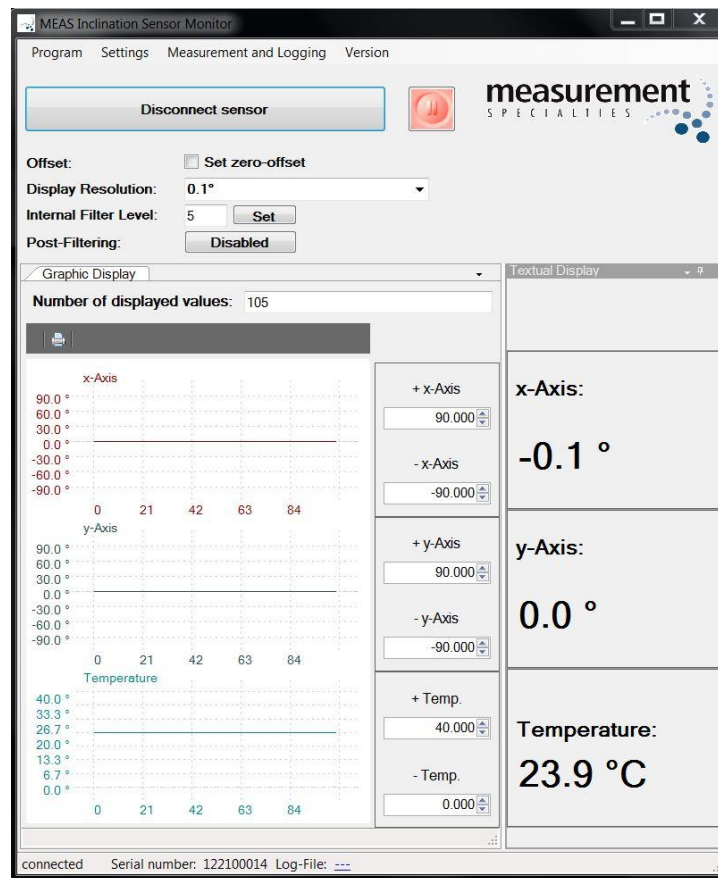


After the inclinometer is connected, you once again have the option to select the operating parameters (see section #3 for details)



5 Inclination Sensor Monitor Program

The 'Inclination Sensor Monitor' window is pictured below, and provides the ability to adjust specific operating parameters directly. See diagram below for details.



DOG2 MEMS-Series USB / DOG1 MEMS-Series USB

Zero setting (tare adjustment), eliminates mounting variances.

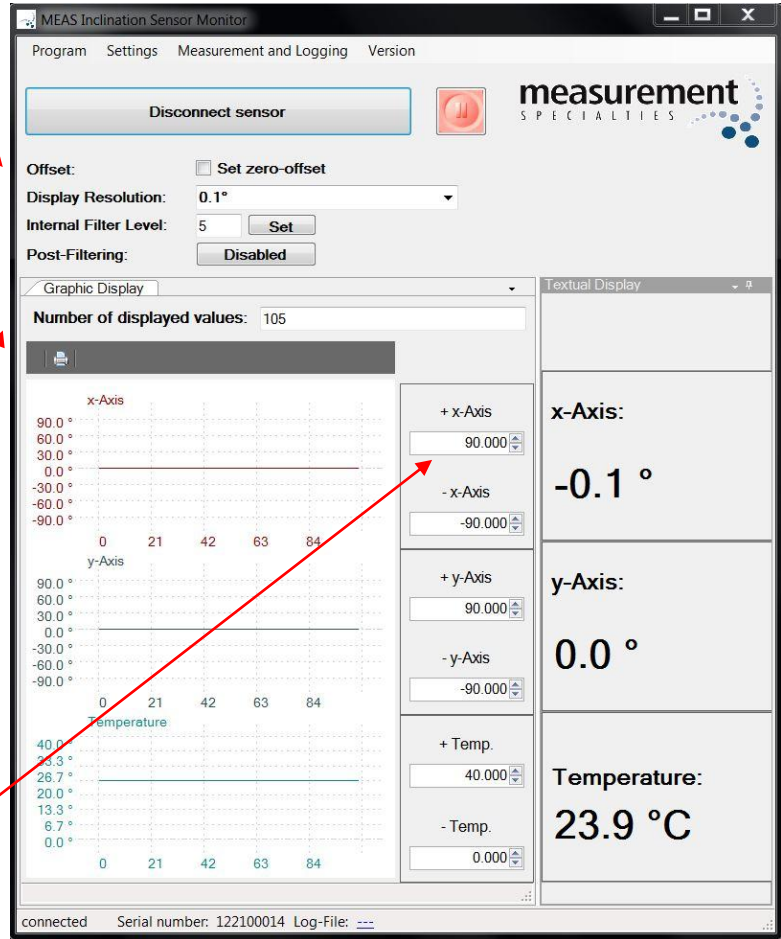
Display resolution
1°, 0.1°, 0.01°, 0.001°

Internal filter level

Post Filter Enable / Disable

Number of measurements displayed
11 to 1000,
default value 105.

X and Y axis maximum displayed values adjustment.



From the menu item "Measurement and Logging", also a logging of the displayed sensor values can be started and stopped. The log file can be opened either by clicking the "Open log-file" option, or the by clicking the link in the status bar at the bottom of the screen.

e.g.:

```
connected    Serial number: 122000002 Log-File: C:\TEMP\log.csv
```

DOG2 MEMS-Series USB / DOG1 MEMS-Series USB

6 Additional Information

CONTACT INFORMATION

NORTH AMERICA	EUROPE	ASIA
Measurement Specialties, Inc. 1000 Lucas Way Hampton, VA 23666 United States Phone: +1-800-745-8008 Fax: +1-757-766-4297 Email: sales@meas-spec.com Web: www.meas-spec.com	MEAS Deutschland GmbH Hauert 13 D-44227 Dortmund Germany Phone: +49-(0)231-9740-0 Fax: +49-(0)231-9740-20 Email: info.de@meas-spec.com Web: www.meas-spec.com	Measurement Specialties China Ltd. No. 26, Langshan Road High-tech Park (North) Nanshan District, Shenzhen 518057 China Phone: +86-755-33305088 Fax: +86-755-33305099 Email: info.cn@meas-spec.com Web: www.meas-spec.com

The information in this sheet has been carefully reviewed and is believed to be accurate; however, no responsibility is assumed for inaccuracies. Furthermore, this information does not convey to the purchaser of such devices any license under the patent rights to the manufacturer. Measurement Specialties, Inc. reserves the right to make changes without further notice to any product herein. Measurement Specialties, Inc. makes no warranty, representation or guarantee regarding the suitability of its product for any particular purpose, nor does Measurement Specialties, Inc. assume any liability arising out of the application or use of any product or circuit and specifically disclaims any and all liability, including without limitation consequential or incidental damages. Typical parameters can and do vary in different applications. All operating parameters must be validated for each customer application by customer's technical experts. Measurement Specialties, Inc. does not convey any license under its patent rights nor the rights of others.