

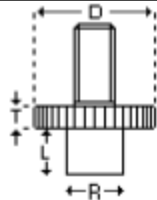
# Alternative Probe Tips For LVDTs



Below are details of the alternative probe tips available for many of our spring return transducers

We reserve the right to supply close alternatives to the items detailed. These items may be less resistant to corrosion and temperature than the rest of the transducer

	Type	D			
	<b>PROB1002</b>	6mm			
	<b>PROB1003</b>	8mm			
	<b>PROB1010</b>	10mm			
	<b>PROB1008</b>	12mm			
	<b>PROB1015</b>	15mm			
	<b>PROB1013</b>	20mm			
	<b>PROB1012</b>	25mm			
<b>PROB1001</b> D = 7.0mm to 8.5mm nominal T = 1.6mm to 4.0mm nominal		T = 2.5mm		<b>PROB1006</b> D = 6mm L = 6mm	<b>PROB1007</b> D = 8mm L = 10mm
	Type	L			
	<b>PROB1022</b>	5mm			
	<b>PROB1011</b>	10mm			
	<b>PROB1023A</b>	20mm			
<b>PROB1024</b>	25mm	D = 6mm Radius = 0.8mm		<b>PROB1033</b> Radius = 3mm D = 6.4mm L = 8mm	<b>PROB1016</b> Radius = 6mm D = 6mm L = 8mm
<b>PROB1009</b> Radius = 8.0mm D = 9.5mm L = 3.5mm	<b>PROB1017</b> Radius = 9.5mm D = 12.0mm L = 4.0mm				

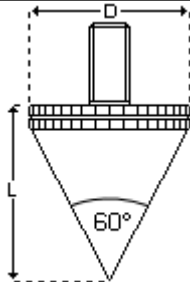


**PROB1018**

Radius =  
2mm  
D = 6.4mm  
L = 2.5mm  
T = 1.5mm

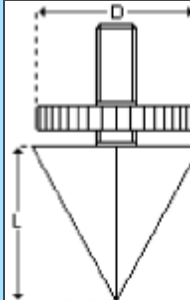
**PROB1019**

Radius =  
4mm  
D = 6.4mm  
L = 2.5mm  
T = 1.5mm



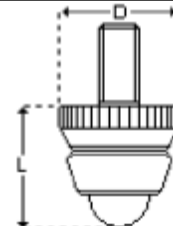
**PROB1020**

D = 8mm  
L = 8.3mm



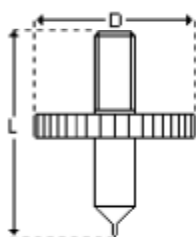
**PROB1021**

D = 8mm  
L = 8mm



**PROB1035**

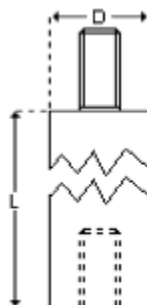
D = 6mm  
L = 6mm



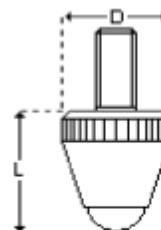
**PROB1036**

D = 8mm  
L = 12mm

Type	L
<b>PROB1025</b>	15mm
<b>PROB1026</b>	20mm
<b>PROB1027</b>	25mm
<b>PROB1028</b>	30mm
<b>PROB1029</b>	40mm
<b>PROB1030</b>	50mm
<b>PROB1031</b>	60mm
<b>PROB1032</b>	70mm



D = 5mm



**PROB1004**

Radius = 1.5mm  
D = 5mm  
L = 6mm

All dimensions and specifications are nominal.

[www.rdpe.com/uk/tips.htm](http://www.rdpe.com/uk/tips.htm)

20141104

Due to our policy of on-going development, specifications may change without notice. Any modification may affect some or all of the specifications for our equipment.

UK Head Office  
RDP Electronics Ltd  
Grove Street, Heath Town  
Wolverhampton, West Midlands, WV10 0PY  
United Kingdom  
Tel: +44 1902 457512  
Fax: +44 1902 452000  
Email: [sales@rdpe.com](mailto:sales@rdpe.com)  
URL: [www.rdpe.com](http://www.rdpe.com)  
Registered in England No. 1688591

## Distribuidor

Brasil e América do Sul

### CONTATO

Endereço

Rua Sete de Setembro, 2656 - Centro  
13560-181 - São Carlos - SP - Brasil

Telefone

+ 55 (16) 3371-0112  
+ 55 (16) 3372-7800

Internet

[www.metrolog.net](http://www.metrolog.net)  
[metrolog@metrolog.net](mailto:metrolog@metrolog.net)

