

# MODEL 1220 Medium Pressure



**PC Board Mountable Pressure Sensor**

**0-50 mV Output**

**Gage, Differential and Absolute**

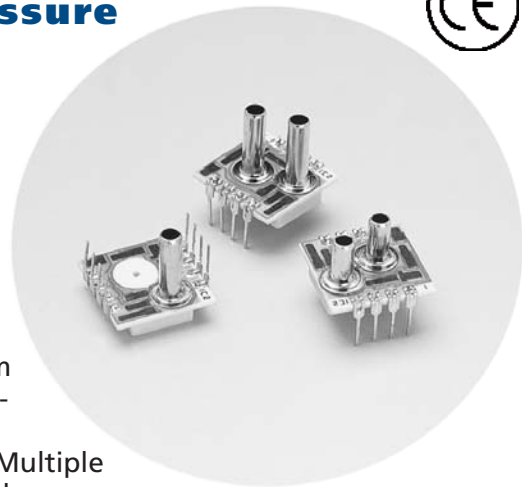
**Temperature Compensated**

## DESCRIPTION

The **Model 1220** is a temperature compensated, piezoresistive silicon pressure sensor packaged in a dual-in-line configuration and intended for cost sensitive applications where excellent performance and long-term stability are required.

Integral temperature compensation is provided over a range of 0-50°C using laser-trimmed resistors. An additional laser-trimmed resistor is included to normalize pressure sensitivity variations by setting the current drive to the sensor bridge, resulting in an interchangeability of ±1% prior to amplification.

Gage, absolute, and differential pressure ranges from 0-2 PSI to 0-100 PSI are available. Multiple lead and tube configurations are also available for customizing the package for specific applications.



Please refer to the low pressure section for information on products with operating pressure less than 0-2 PSI. For a compensated sensor using a gain set resistor as opposed to a current set resistor, please refer to the Model 1210.

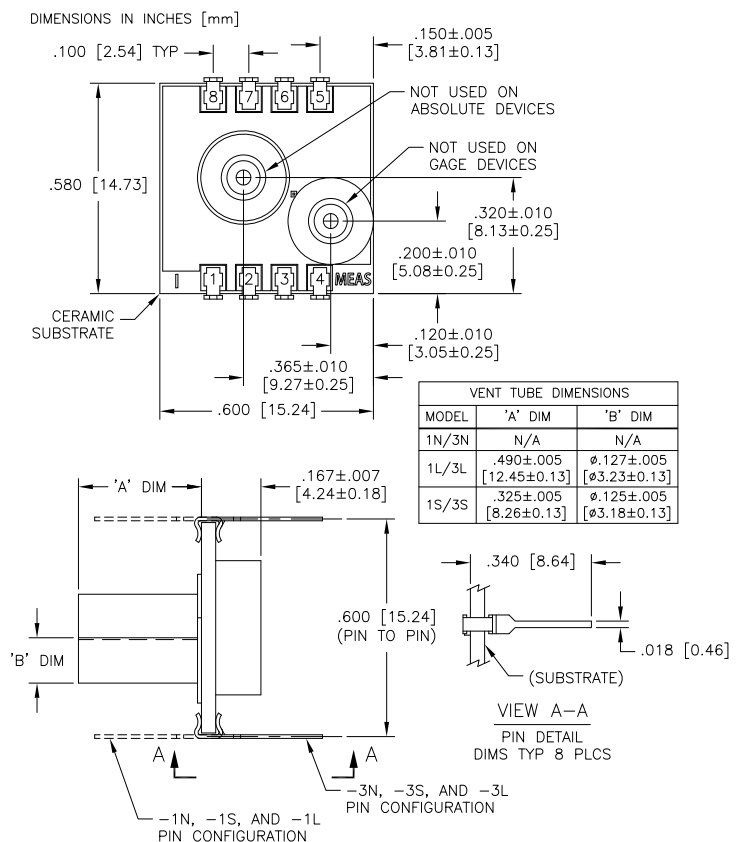
## FEATURES

- ◆ Dual-in-line Package
- ◆ ±0.1% Non-linearity
- ◆ 0.5% Temperature Performance
- ◆ 1.0% Interchangeable Span (provided by current set resistor)
- ◆ Solid State Reliability
- ◆ Low Power

## APPLICATIONS

- ◆ Medical Instruments
- ◆ Air Flow Measurement
- ◆ HVAC
- ◆ Process Control
- ◆ Factory Automation

## dimensions



## Standard Ranges

Range	psia	psid	psi
0 to 2		•	•
0 to 5	•	•	•
0 to 15	•	•	•
0 to 30	•	•	•
0 to 50	•	•	•
0 to 100	•	•	•



# MODEL 1220 Medium Pressure

## performance specifications

Supply Current: See application schematic

Ambient Temperature: 25°C (Unless otherwise specified)

### PRESSURE RANGE 2 -100 psi

PARAMETERS	MIN	TYP	MAX	UNITS	NOTES
Full Scale Output Span	49.5	50	50.5	mV	1
Zero Pressure Output			2	±mV	2
Pressure Non-linearity	--	0.05	0.1	±%Span	3
Pressure Hysteresis		0.01	0.1	±%Span	
Input & Output Resistance	2500	4400	6000	Ω	
Temperature Error - Span		0.3	0.5	±%Span	2, 4
Temperature Error - Zero		0.1	0.5	±%Span	1,2,4
Thermal Hysteresis - Zero		0.1		±%Span	
Supply Current			2.0	mA	
Response Time (10% to 90%)		1.0		msec	5
Output Noise		1.0		µV p-p	6
Output Load Resistance	2			MΩ	7
Insulation Resistance (50 VDC)	50			MΩ	
Long Term Stability		0.2		±%Span/yr	
Pressure Overload			3X	Rated	8
Operating Temperature	-40°C to +125°C				
Storage Temperature	-50°C to +150°C				
Media	Non-Corrosive Gases Compatible with Wetted Materials				9
Weight	3 Grams				

### Notes

- For 2 psi output span on a 5 psi sensor span is 20.0mV ± 1%, amplified span is 1.232V and TC zero temperature error is ± 1.25%
- Compensation resistors are in an integral part of the sensor package; no additional external resistors are required.
- Best Fit Straight Line.
- Temperature range: 0-50°C in reference to 25°C.
- For a zero-to-full scale pressure step change.
- 10 Hz to 1kHz.

- Prevents increase of TC-Span due to output loading
- 3X or 200 psi maximum, whichever is less, 20 psi for 2 psi and 5 psi versions.
- Wetted materials are glass, ceramic, silicon, RTV, nickel, gold, and aluminum.
- Soldering of lead pins: 250°C for 5 seconds maximum.
- Tube length: L=490 ± 5 mil, S=325 ± 5 mil, N=no tube.
- Lead pins can either be in the same or the opposite direction as the pressure tube. See Dimensions drawing for lead configurations.

### ordering information

1220 A - 015 G - 3 S

- Pressure Tubes (L, S, N - see note 11)
- Lead Configuration (1, 3 - see note 12)
- Type (G = Gage, D = Differential)
- Pressure Range
- Grade
- Model

### application schematic

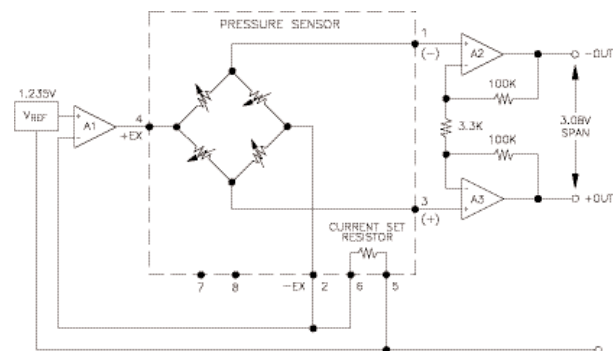
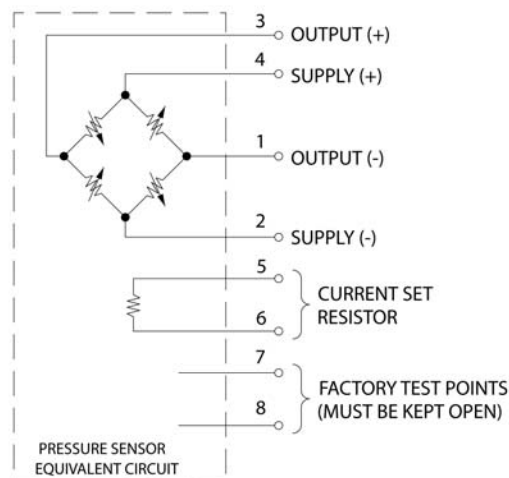


FIGURE 1: CURRENT SET CIRCUIT

### connections



Pressure Sensors Technical Support  
 (510) 498-1570 ext 2509  
 Fax (510) 498-1578  
 pressure@meas-spec.com



# Distribuidor

Brasil e América do Sul

## CONTATO

### Endereço

Rua Sete de Setembro, 2671 - Centro  
13560-181 - São Carlos - SP - Brasil

### Telefone

+55 (16) 3371-0112

### Fax

+55 (16) 3372-7800

### Internet

[www.metrolog.net](http://www.metrolog.net)  
[metrolog@metrolog.net](mailto:metrolog@metrolog.net)

